



**India Meteorological Department  
(Ministry of Earth Sciences)**

**BULLETIN NUMBER: 10 (AS/03/2021)**

**TIME OF ISSUE: 0815 HOURS IST**

**DATED: 09.11.2021**

**FROM: INDIA METEOROLOGICAL DEPARTMENT (FAX NO. 24643965/24699216/24623220)**

**TO: CONTROL ROOM, NDM, MINISTRY OF HOME AFFAIRS (FAX.NO. 23093750)  
CONTROL ROOM NDMA (FAX.NO. 26701729)  
CABINET SECRETARIAT (FAX.NO.23012284, 23018638)  
PS TO HON'BLE MINISTER FOR S & T AND EARTH SCIENCES (FAX NO.23316745)  
SECRETARY, MOES, (FAX NO. 24629777)  
H.Q. (INTEGRATED DEFENCE STAFF AND CDS) (FAX NO. 23005137/23005147)  
DIRECTOR GENERAL, DOORDARSHAN (23385843)  
DIRECTOR GENERAL, AIR (23421105, 23421219)  
PIB MOES (FAX NO. 23389042)  
UNI (FAX NO. 23355841)  
D.G. NATIONAL DISASTER RESPONSE FORCE (NDRF) (FAX NO. 26105912, 2436 3260)  
DIRECTOR, PUNCTUALITY, INDIAN RAILWAYS (FAX NO. 23388503)  
CHIEF SECRETARY, MAHARASHTRA (FAX NO 022-22028594)  
CHIEF SECRETARY, GUJARAT (FAX NO 079-23250305)  
ADMINISTRATOR, DAMAN, DIU, DADRA & NAGAR HAVELI (FAX NO 0260-2230775)  
CHIEF SECRETARY, GOA (FAX NO 0832-2415201)  
CHIEF SECRETARY, KARNATAKA (FAX NO 080-22258913)  
CHIEF SECRETARY, KERALA (FAX NO 0471-2327176)  
ADMINISTRATOR, LAKSHADWEEP (FAX NO 04896-26284)  
CHIEF SECRETARY, ANDAMAN & NICOBAR ISLANDS (FAX NO. 03192- 232656)  
CHIEF SECRETARY, ANDHRA PRADESH (FAX NO. 0863-2441029, 08645-246600)  
CHIEF SECRETARY, TAMIL NADU (FAX NO 044-25672304)  
CHIEF SECRETARY, PUDUCHERRY (FAX NO 0413-2334145)**

**Sub: (a) Depression weakened into a Well Marked Low Pressure Area over central parts of Arabian Sea  
(b) Likely formation of a Low Pressure Area over southeast Bay of Bengal, its intensification & movement towards north Tamil Nadu coast during 09<sup>th</sup>-11<sup>th</sup> November 2021.**

**(a) Depression weakened into a Well Marked Low Pressure Area over central parts of Arabian Sea**

The Depression over eastcentral & adjoining west-central Arabian Sea moved west-southwestwards and weakened into a Well Marked Low Pressure Area at 0530 hrs IST of 9<sup>th</sup> November, 2021, over central parts of Arabian Sea. It is likely to move west-southwestwards during next 03 days.

As the system is very likely to move **away from the Indian coast no adverse impact is likely over the Indian landmass.**

### Warnings:

#### (i) Rainfall

- No heavy rainfall warning in association with the system.

#### (ii) Wind warning

- Squally wind speed reaching 40-50 kmph gusting to 60 kmph likely to prevail over central parts of Arabian Sea for next 12 hours. It would further decrease becoming 30-40 kmph gusting to 50 kmph over west-central Arabian Sea from 09<sup>th</sup> November evening.

#### (iii) Sea condition

- Sea condition will be rough to very rough over central parts of Arabian Sea till evening of 9<sup>th</sup> November 2021.

#### (iv) Fishermen Warning

- Fishermen are advised not to venture into central parts of Arabian Sea till evening of 9<sup>th</sup> November 2021. (Graphics enclosed).

### **(b) Likely formation of a Low Pressure area over southeast Bay of Bengal**

The cyclonic circulation over southeast Bay of Bengal and adjoining south Andaman Sea now lies over southeast Bay of Bengal & neighbourhood and extends up to 5.8 Km above mean sea level there at 0530 hrs IST of 09<sup>th</sup> November. Under its influence, a low pressure area is very likely to form over southeast Bay of Bengal and neighbourhood during next 12 hours. It is likely to move west –northwestwards, **concentrate into a Depression and reach near north Tamilnadu coast by the early morning of 11<sup>th</sup> November, 2021.**

In association with this formation, there would be a continuation of the ongoing active rain spell over Tamil Nadu till 11<sup>th</sup> November.

### Warnings:

#### (i) Rainfall (warning graphics enclosed)

**9<sup>th</sup> Nov.:** Light to moderate rainfall at most places with **heavy to very heavy rainfall falls** at isolated places very likely over Tamil Nadu and **heavy rainfall** at isolated places over south coastal Andhra Pradesh.

**10<sup>th</sup> Nov.:** Light to moderate rainfall at most places with **heavy to very heavy rainfall** at a few places & extremely heavy falls at isolated places very likely over coastal Tamil Nadu and south coastal Andhra Pradesh.

**11<sup>th</sup> Nov.:** Light to moderate rainfall at most places **with heavy to very heavy rainfall & extremely heavy falls** at isolated places very likely over coastal Tamil Nadu south coastal Andhra Pradesh.

**12<sup>th</sup> Nov.** Light to moderate rainfall at most places with **heavy rainfall** at isolated places very likely over Tamil Nadu.

#### (ii) Wind warning

- Squally wind speed reaching 45-55 kmph gusting to 65 kmph likely to prevail over southeast Bay of Bengal on 9<sup>th</sup> & 10<sup>th</sup> November, over southwest Bay of Bengal during 10<sup>th</sup> – 11<sup>th</sup> November and along & off Tamil Nadu & adjoining south Andhra Pradesh coasts on 11<sup>th</sup> November.

#### (iii) Sea condition

- Sea condition will be rough to very rough over southeast Bay of Bengal on 9<sup>th</sup> & 10<sup>th</sup> November, over southwest Bay of Bengal during 10<sup>th</sup> – 11<sup>th</sup> November and along & off Tamil Nadu & adjoining south Andhra Pradesh coasts on 11<sup>th</sup> November.

**(iv) Fishermen Warning (in association with the likely formation of the system)**

- Fishermen are advised not to venture into southeast Bay of Bengal on 9<sup>th</sup> & 10<sup>th</sup> November, over southwest Bay of Bengal during 10<sup>th</sup> – 11<sup>th</sup> November and along & off Tamil Nadu & adjoining south Andhra Pradesh coasts on 11<sup>th</sup> November. (Graphics enclosed).
- Fishermen out in the Sea are advised to return to coast by 9<sup>th</sup> November.

**(v) EXPECTED IMPACT & ACTION SUGGESTED**

Localized Flooding of roads, inundation and water logging in low lying areas and closure of underpasses mainly in urban areas.

- Occasional reduction in visibility due to heavy rainfall.
- Disruption of traffic in major cities due to water logging in roads leading to increased travel time.
- Minor damage to kutcha roads.
- Possibilities of damage to vulnerable structure.
- Localized Landslides/Mudslides
- Damage to horticulture and standing crops in some areas due to inundation.
- It may lead to riverine flooding in some river catchments (for riverine flooding please visit Web page of CWC)
- Recreational & Tourism activities along the coastal belt may be restricted.

IMD is continuously monitoring the situation and updates would be sent regularly based on its development and further movement.

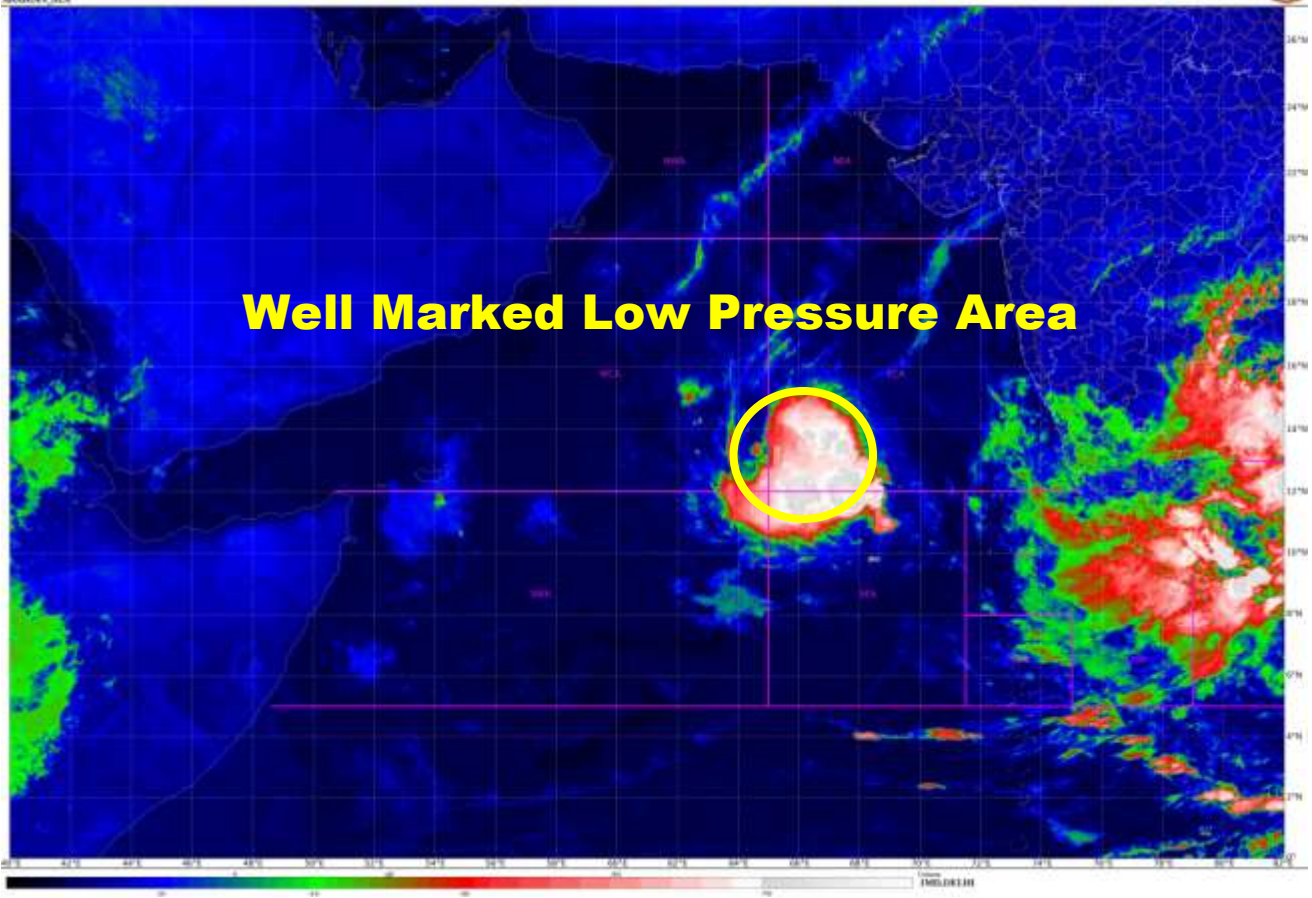
***This is the last Bulletin pertaining to this System.*** However, update on Bay of Bengal system will be provided at 1130 hours IST of today and *regular weather bulletins will be continued from the National Weather Forecasting Centre, New Delhi and RMC Chennai.*

**(Shobhit Katiyar)**  
**Scientist-C, RSMC, New Delhi**

*Copy to: ACWC Mumbai/ CWC Ahmedabadr/MC Goa/CWC Thiruvananthapuram*

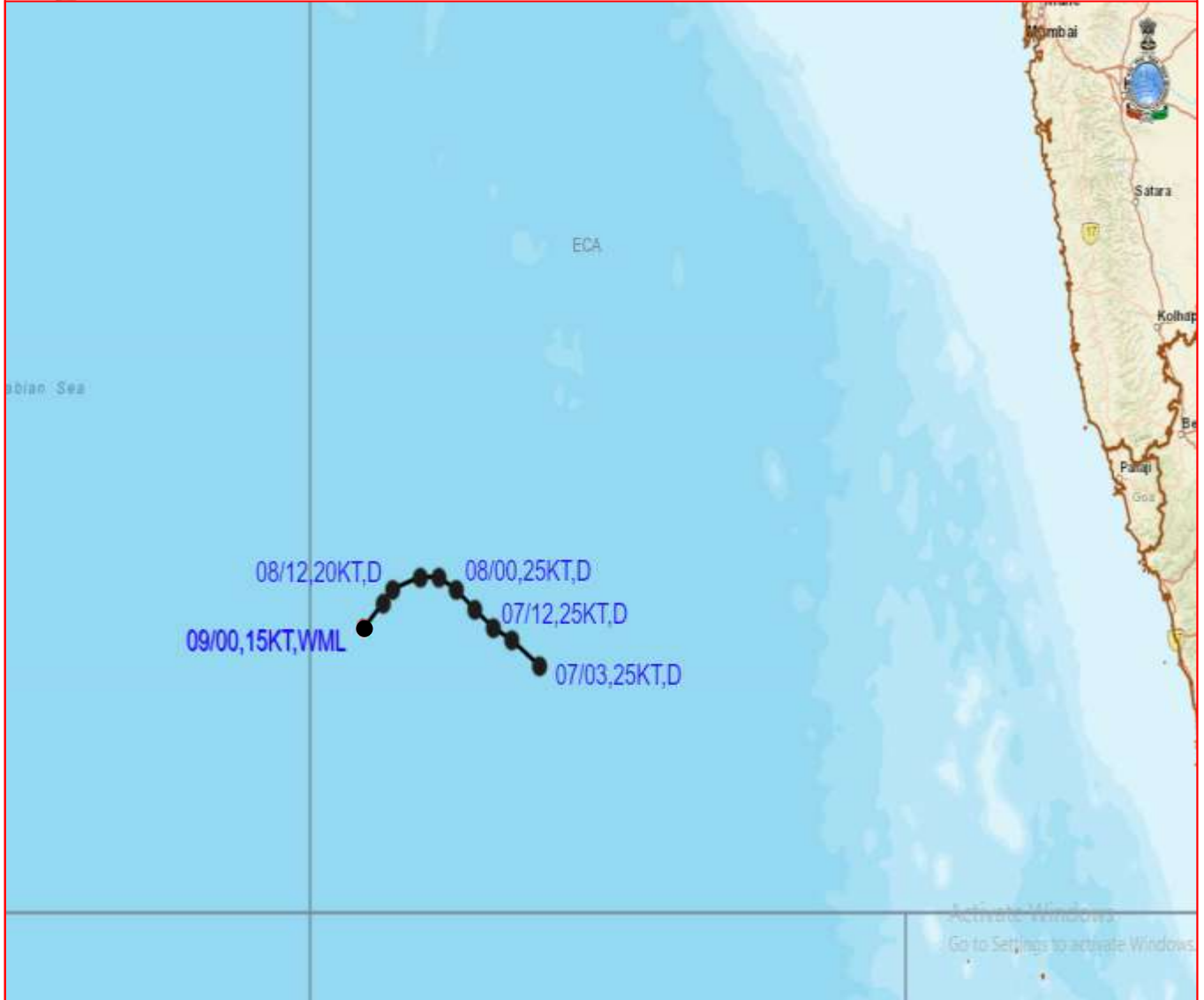
**LEGEND: Heavy Rainfall:** 64.5 to 115.5mm, **Very Heavy Rainfall:** 115.6 to 204.4mm **Most**

**Places:** more than 76% of total stations, **Isolated Places:** Less than 25% of total stations





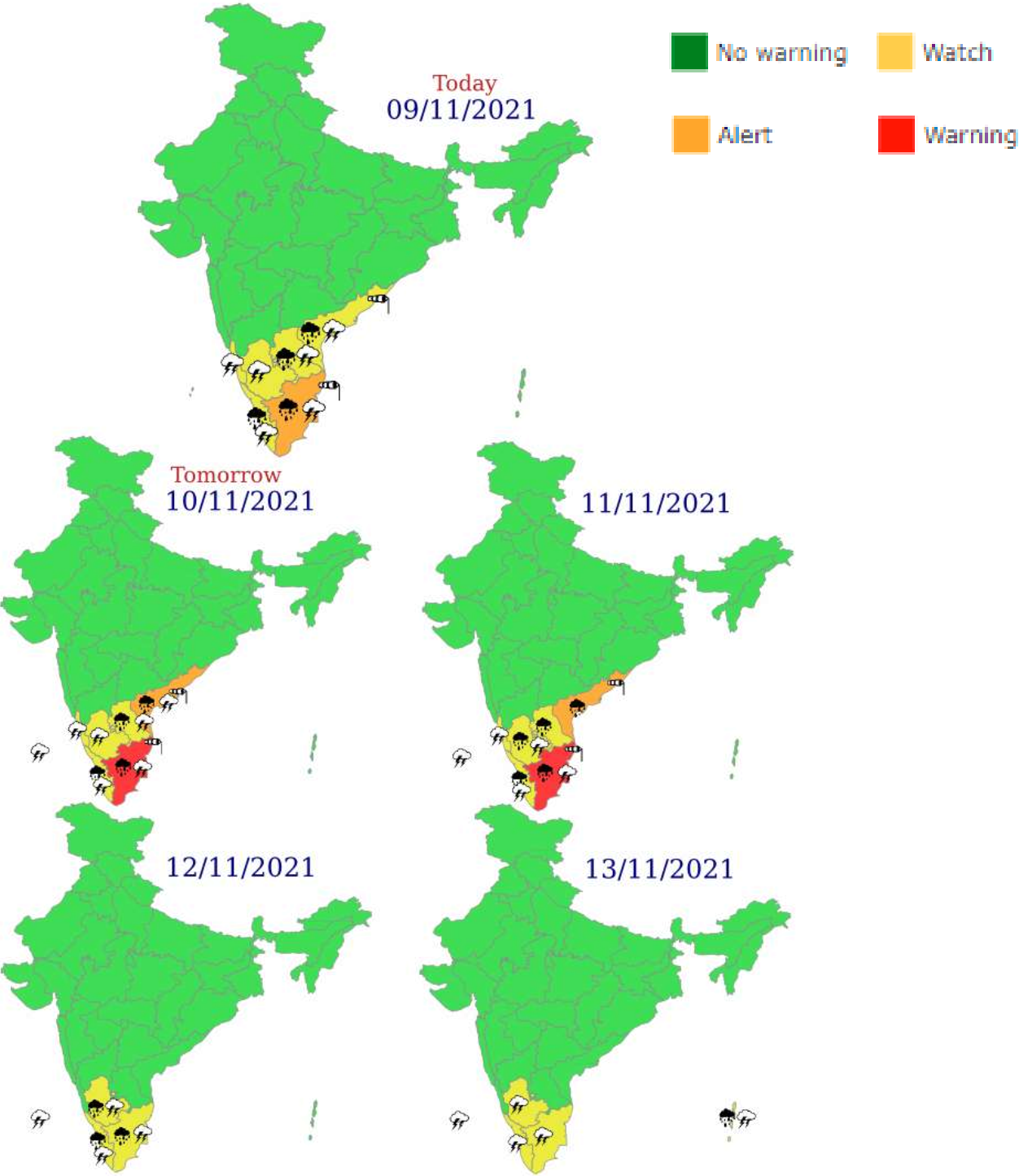
## OBSERVED TRACK OF DEPRESSION OVER ARABIAN SEA DURING 07<sup>TH</sup>-09<sup>TH</sup> NOVEMBER, 2021



DATE/TIME IN UTC  
IST=UTC + 0530  
L: LOW PRESSURE AREA  
WML: WELL MARKED LOW PRESSURE AREA  
D: DEPRESSION (17-27 KT)  
DD: DEEP DEPRESSION (28-33 KT)  
CS: CYCLONIC STORM (34-47 KT)  
SCS: SEVERE CYCLONIC STORM (48-63KT)  
VSCS: VERY SEVERE CYCLONIC STORM (64-89 KT)  
ESCS: EXTREMELY SEVERE CYCLONIC STORM (90-119 KT)  
SuCS: SUPER CYCLONIC STORM ( $\geq$  120 KT)

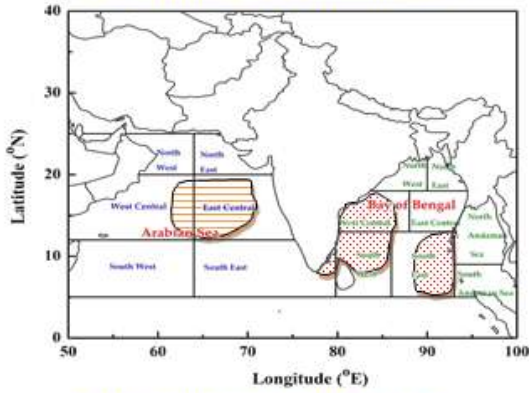
-  LESS THAN 34 KT
-  34-47 KT
-   $\geq$  48 KT
-  OBSERVED TRACK
-  FORECAST TRACK
-  CONE OF UNCERTAINTY

# Meteorological Sub-division level heavy rainfall warning

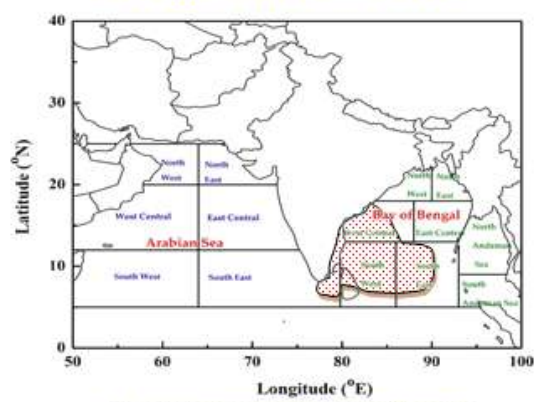


**INDIA METEOROLOGICAL DEPARTMENT**  
**FISHERMAN WARNING FOR BAY OF BENGAL AND ARABIAN SEA**

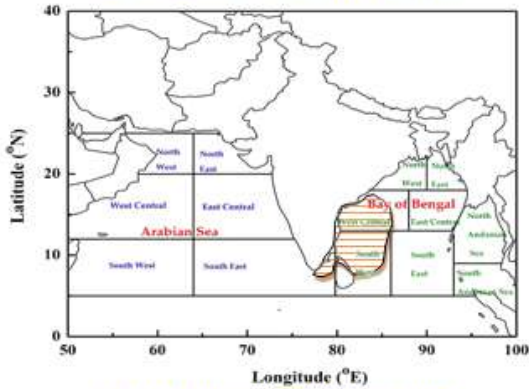
DAY-1: 08.11.2021/0600 UTC TO 09.11.2021/0600 UTC



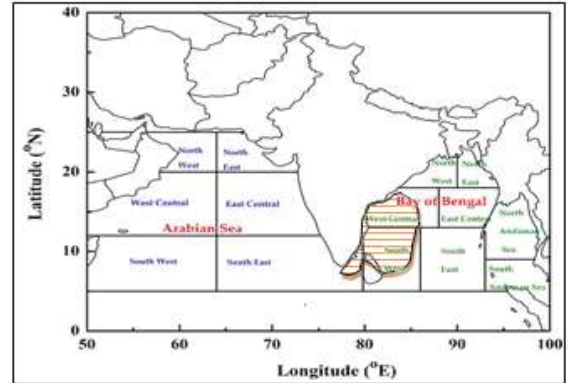
DAY-2: 09.11.2021/0600 UTC TO 10.11.2021/0600 UTC



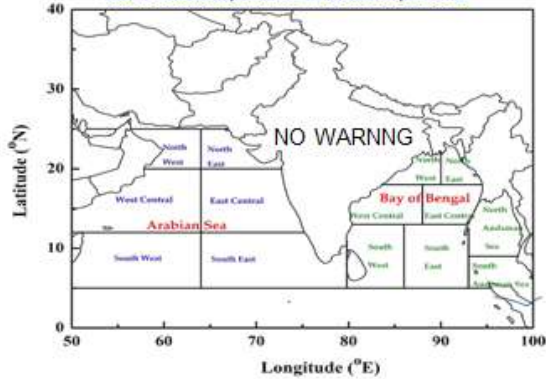
DAY-3: 10.11.2021/0600 UTC TO 11.11.2021/0600 UTC



DAY-4: 11.11.2021/0600 UTC TO 12.11.2021/0600 UTC



DAY-5: 12.11.2021/0600 UTC TO 13.11.2021/0600 UTC



**AREA UNDER FISHERMEN WARNING**

- 40-50 KMPH GUSTING TO 60 KMPH (SQUALLY WEATHER)
- 45-55 KMPH GUSTING TO 60 KMPH (SQUALLY WEATHER)
- 50-60 KMPH GUSTING TO 70 KMPH (STRONG WIND)